



## Memorandum

**Date:** September 27, 2018  
**Project:** SOX585  
**To:** Ms. Brittany Lobo, Mr. Laurel Chambers  
Sonoma County Public Health Division  
**From:** Steve Weinberger  
[sweinberger@w-trans.com](mailto:sweinberger@w-trans.com)  
Julia Walker  
[jwalker@w-trans.com](mailto:jwalker@w-trans.com)  
**Subject:** SRTS High Schools – Petaluma High School Draft Recommendations

---

As part of Activity 1.6, Walking Audits Recommendation Report, the walking audit was completed for Petaluma High School on April 4, 2018. This meeting and site visit was coordinated with Maitreyi Siruguri from the Center for Climate Protection. A list of preliminary major and minor infrastructure improvement recommendations was developed, based on location and identified issues, and a map showing these recommendations prepared.

Following are recommendations based on identified issues from the walking audit which were discussed with attendees.

1. Location: Fair Street at Campus Entrance – Bus Loading Zone

**Issue:** There is an existing bus loading zone on Fair Street at the main campus entrance. The loading zone includes white curb, signage, and two dividers to separate the bus loading zone from the travel lane. There is one small sign mounted on the utility pole near the main entrance that indicates the times that parking is prohibited; however, during the walk audit, parents were observed parking and dropping off students in the bus loading zone.

**Recommendation:** The City should consider improving signage to prominently identify the location of the bus loading zone and display prohibited parking times. Additionally, painting the pavement could potentially increase driver awareness of the loading zone and decrease the amount of parents using it as a drop-off area.

**Issue:** There are conflict issues between vehicles travelling along Fair Street with pedestrians as jay walking from north side of the street to campus was observed. Additionally, vehicles along Fair Street were observed traveling above the posted speed limit.

**Recommendation:** Petaluma High School should implement a program to educate their students on safety at crossings. School zone speed limit signs should be posted along the segment of Fair Street that fronts the school as there are currently none. Raised crosswalks along Fair Street should be considered to decrease speeds near the school.

**Issue:** The head-in slot parking spaces are a potential hazard as it may be difficult to view vehicles/cyclists/pedestrians traveling along Fair Street when backing out of parking spaces.

**Recommendation:** Consideration should be made to reconfigure parking spaces to diagonal slots, which has been found to decrease conflicts between drivers and pedestrian, according to the highway safety association.

2. Location: Fair Street/Basset Street

Issue: Motorists traveling east along Fair Street have a lack of sight distance of pedestrians crossing from the southwest to the northwest corner of the intersection of Fair Street/Basset Street.

Recommendation: Bulb-outs should be considered to increase the visibility of pedestrians and reduce the crossing distance at the intersection.

3. Location: English Street

Issue: There is no paved walking or sidewalk along the east side of English Street between Broadway and Fair Street. Community members at the walk audit expressed that the path becomes muddy during periods of inclement weather. It should be noted that the gravel path continues along the north side of Broadway Street between English Street and Bassett Street. There are no existing bicycle lanes along English Street near the campus.

Recommendation: A new sidewalk should be paved at this location and ADA curb ramps should be installed. High-visibility ladder crosswalks should be marked at all English Street approaches to the intersections with Webster Street, Broadway Street, and Sheldon Street. At the intersection of Sheldon Street/English Street, double sided school zone sign assemblies should be added to both English Street approaches.

4. Location: Broadway Street/Bassett Street

Issue: Community members expressed the intersection is a major access point for the rear entrance of the school. The intersection is also uncontrolled which has the potential to cause hazards as it is regularly accessed during peak periods of pick-up and drop-off.

Recommendation: This intersection should be investigated by the City to determine if it meets warrants for conversion to All-Way Stop Control.

5. Location: Hayes Lane

Issue: This road borders the southeast area of the campus, however there is currently no school zone signage along the segment.

Recommendation: High-visibility ladder crosswalks should be marked on all legs of Hayes Lane at the intersections with Webster Street, Pearce Street, and Hill Boulevard-Nob Hill Terrace. Double-sided school zone sign assemblies should be placed along Hayes Lane between Hill Boulevard-Nob Hill Terrace and Hinman Street.

6. Location: B Street

Issue: B Street has been identified as a walking route to school, however there is only crosswalks on the north and west legs of B Street/Fair Street.

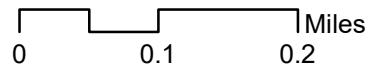
Recommendation: High-visibility ladder crosswalks should be striped along B Street at the intersections of Hinman Street and Webster Street, and additional crosswalks to the south and east legs of the intersection with Fair Street should be installed.

Please call if you have any questions.



# PETALUMA HIGH SCHOOL

## DRAFT RECOMMENDATION LOCATIONS



### Recommendations

- ① Reconfigure frontage of campus for drop-offs
- ② Install bulb-outs at intersection
- ③ Repave sidewalks and install high visibility ladder crosswalks along English Street between Broadway Street and Fair Street
- ④ Consideration for an All-Way Stop Control Warrant
- ⑤ Install high visibility ladder crosswalks along Hayes Lane at identified intersections
- ⑥ Install high visibility ladder crosswalks along B Street at identified intersections



## Bike Smart!



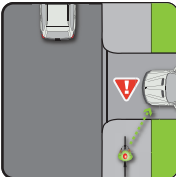
**Wear a Helmet.** It's the law, and it's the smart thing to do. Helmets should fit snugly, sit level on your head, and always be buckled firmly under your chin.

**Ride with Traffic.** Ride on the right, in the same direction of traffic. Follow all signs and signals.



**Share the Path.** Pass walkers carefully on paths. Ring your bell or call "on your left" before passing.

**Lock Your Bike.** Always lock your bike frame and front wheel to the bike rack to prevent theft.



**Make Eye Contact.** Don't assume that drivers see you, especially when entering or crossing a street. Make eye contact before you cross, even if it is your turn.

**Be Alert.** If biking on the street, watch for opening car doors and cars turning across your path.



**Be Visible.** Ride where cars can see you. Wear bright clothes, and use lights and reflectors when it is dark outside.

**Be Predictable.** Ride in a straight line and always signal your moves to others.

### Bikeway Classifications



**Class I Path** - Off-street path for bicycles and pedestrians

**Class II Bike Lane** - On-street bikeway separated from vehicles by lane striping

**Class III Bike Route** - On-street bikeway shared with vehicles, typically designated by bike route signs and sharrow markings (see image to the left)

**Class IV Separated Bikeway** - On-street bikeway physically separated from vehicles by curbs or other buffers.



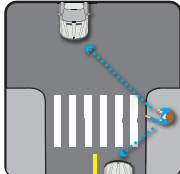
## Walk Smart!



CHECK BOTH DIRECTIONS

**Look Before You Cross.** Look left, right, and left again before crossing a street or look over your shoulder for turning cars, especially at intersections.

**Make Eye Contact.** Don't assume that drivers see you. Make eye contact before you cross the street.



**Use the Cross walk.** Cross at corners or at a marked crosswalk. This is where drivers expect to see you.

**Follow the Rules.** Follow directions from crossing guards.



**Be Visible.** Walk where cars and bikes can see you. Wear bright clothes, and use lights and reflectors when it is dark outside.

### How Were These Recommended Routes Chosen?

The suggested routes shown on this map identify streets most suitable for walking and biking to school. Some of these routes may be slightly longer than the most direct route, but they provide bicycle and pedestrian facilities, and less vehicle traffic, making it safer to students walking and biking.

# WALK & ROLL TO SCHOOL



## Recommended Routes

# Petaluma High School

201 Fair St  
Petaluma, CA 94952



# PETALUMA HIGH SCHOOL

## RECOMMENDED ROUTES FOR WALKING & BIKING TO SCHOOL



- |  |                           |  |                             |
|--|---------------------------|--|-----------------------------|
|  | Signalized Intersection   |  | School Access Point         |
|  | All-Way Stop Intersection |  | Recommended Bicycling Route |
|  | Class I Shared-Use Path   |  | Recommended Walking Route   |
|  | Class II Bicycle Lane     |  |                             |
|  | Class III Bicycle Route   |  |                             |

*This Recommended Routes to Walk & Bike to School map provides you with information to improve your choices as you walk, ride your bicycle, carpool, or bus to school. The suggested routes were developed based on parent and student input. We cannot guarantee the safety of the suggested routes; parents and students are encouraged to inspect the routes on their own to ensure that the routes are as safe as possible.*